

Pinwheel Pin Cushion

For Coastal Quilters Guild Members

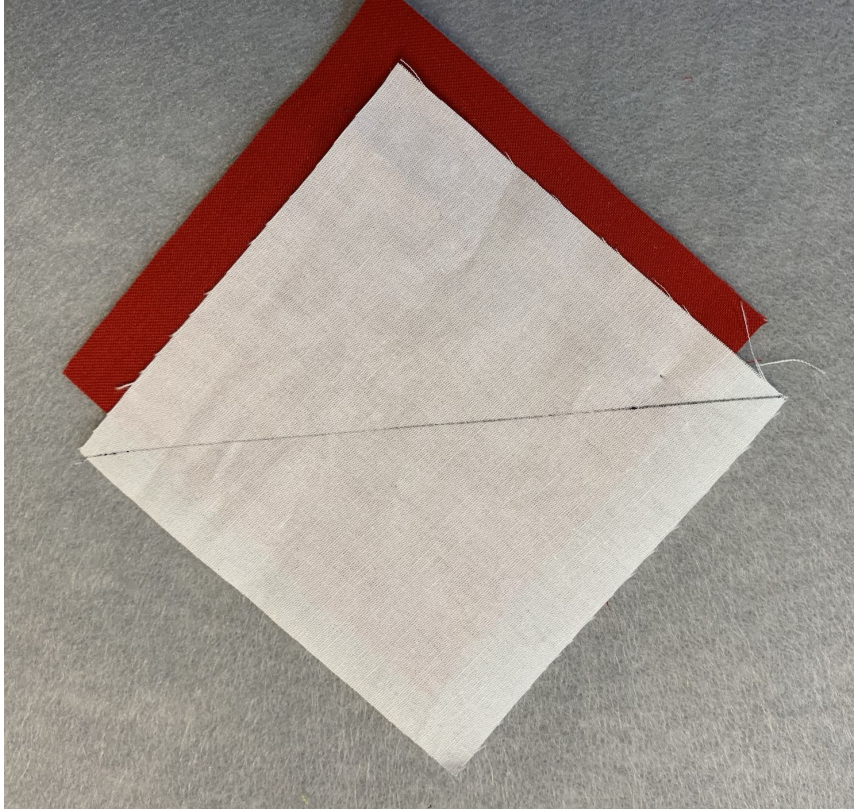
You will need:

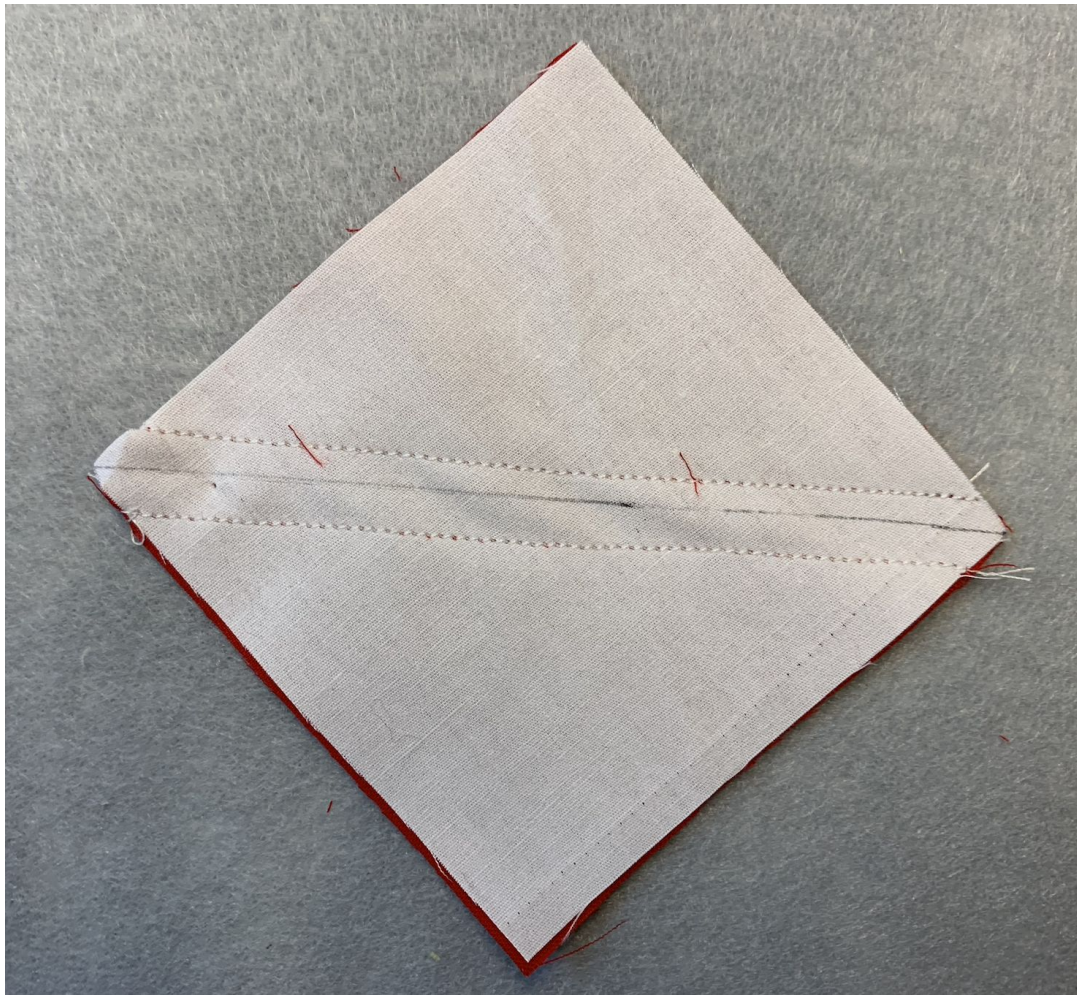
- 2 pieces 3 ½ x 3 ½ inches main fabric
- 2 pieces 3 ½ x 3 ½ inches contrast fabric
- 2 pieces 3 ½ x 6 inches for back
- Embroidery floss or pearl cotton
- A big needle with a large eye
- A button
- Polyester fiberfill
- Basic Sewing Supplies

Instructions:

Make 4 half square triangles;

- Place one main and one contrast piece right sides together
- Draw a line from one corner to the opposite corner diagonally across the back of the lightest fabric.

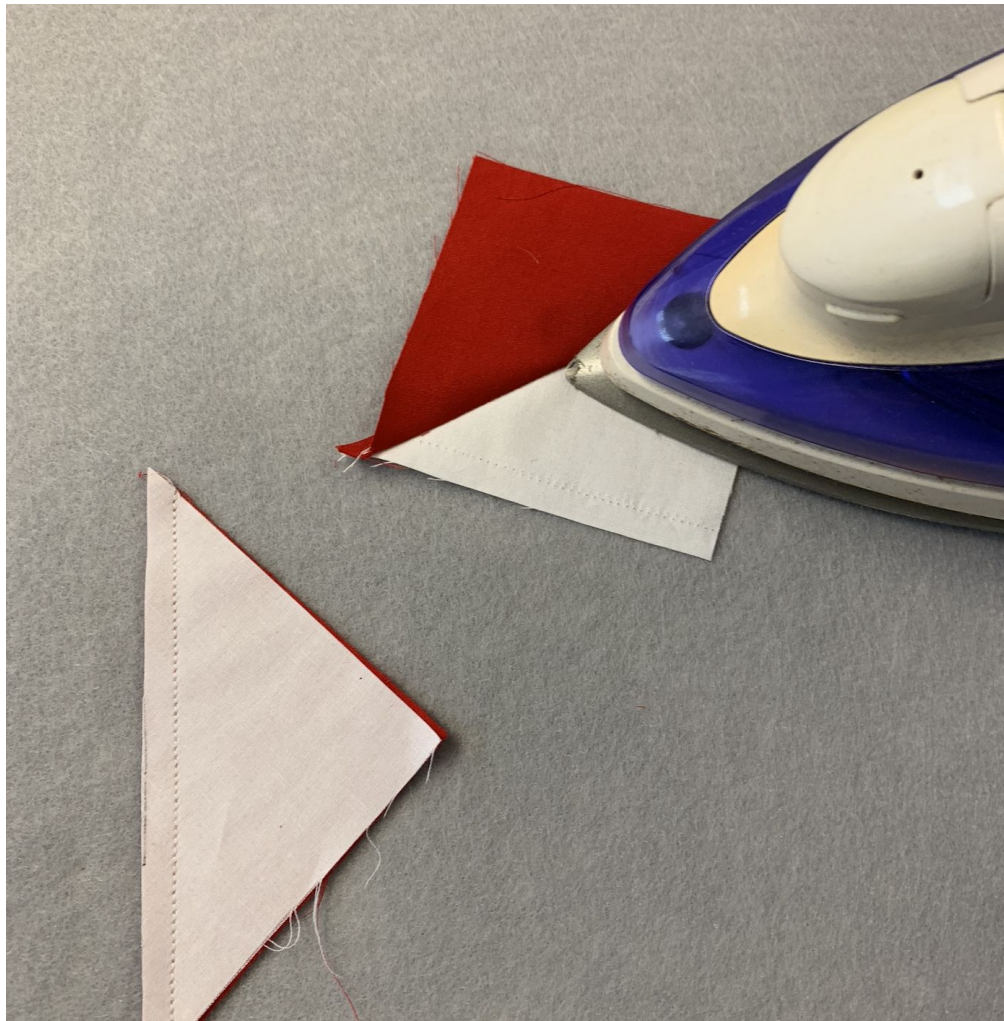




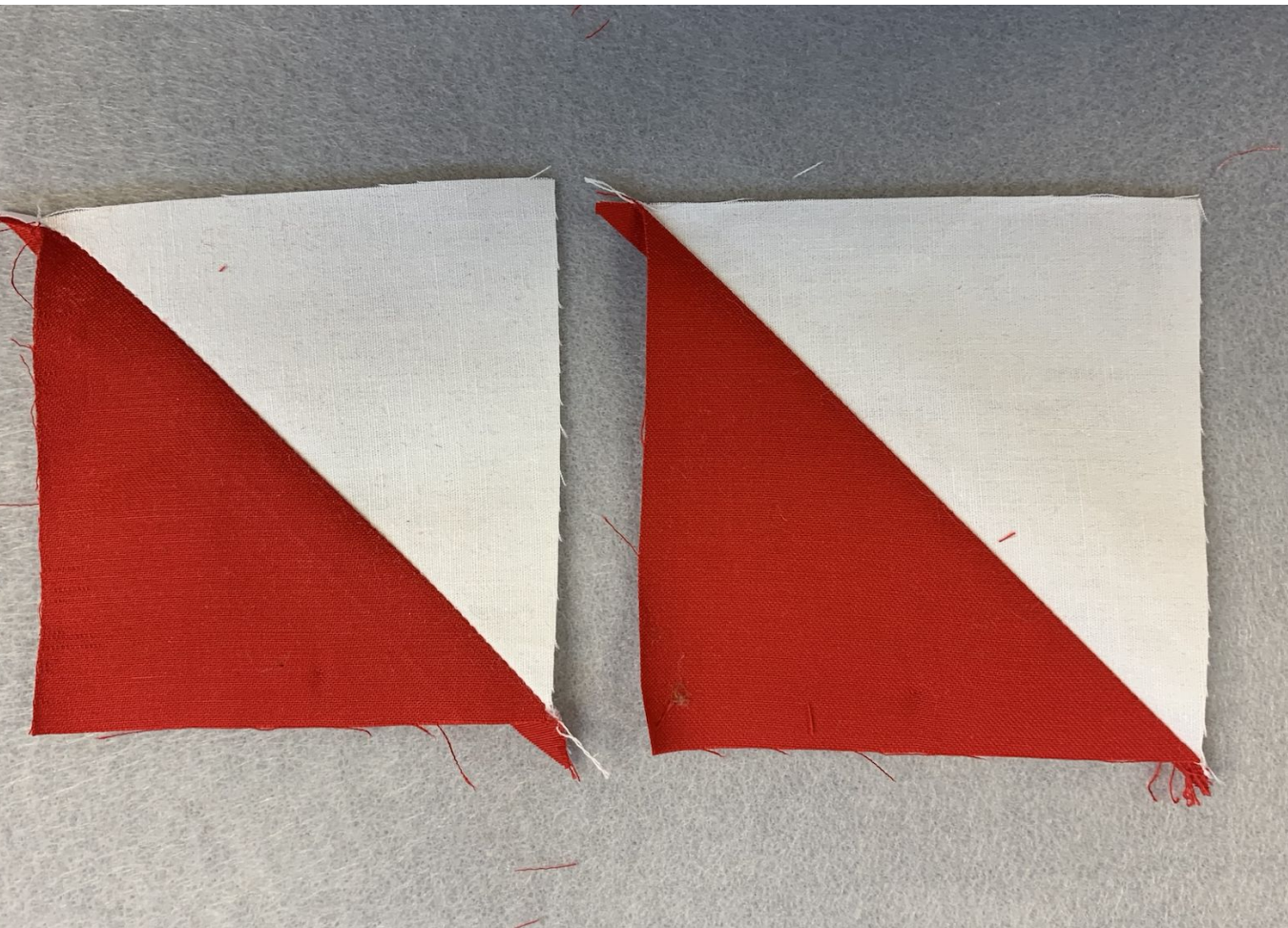
Stitch $\frac{1}{4}$ inch
from the line on
both sides of the
drawn line.



Cut on the line.



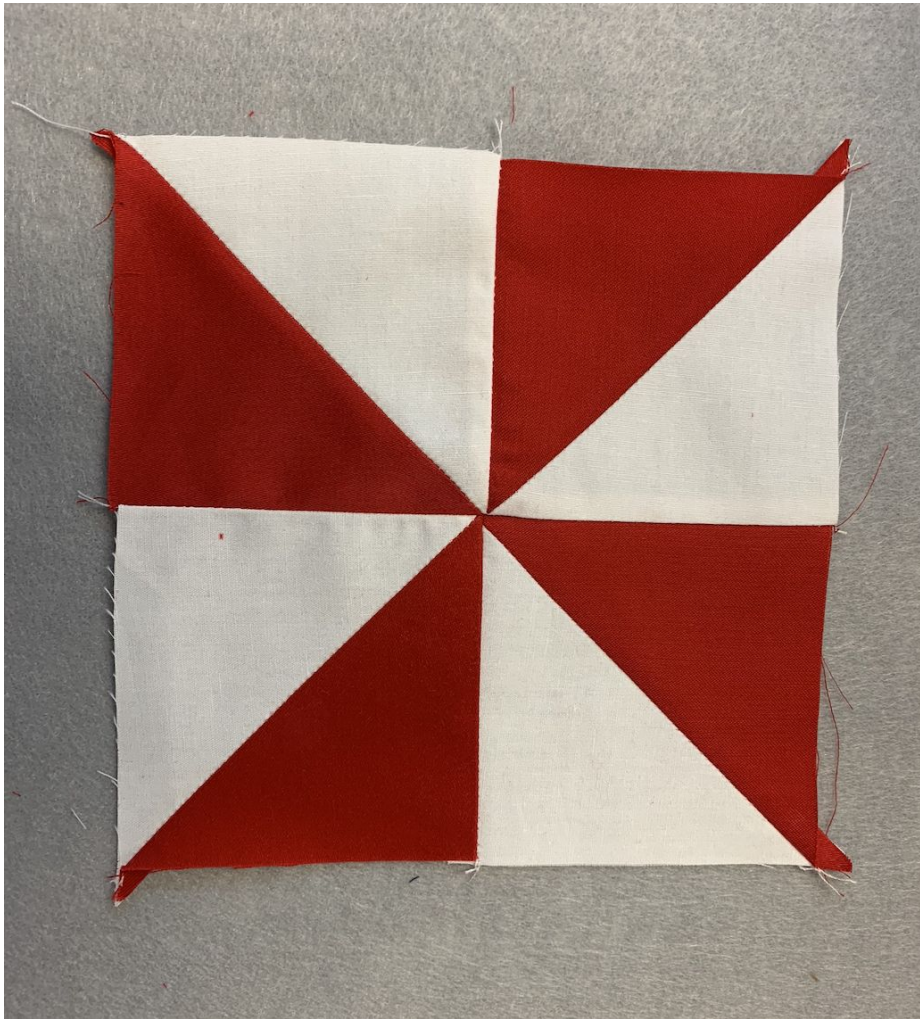
Open and
press the
seam
allowance
towards the
darkest
fabric.



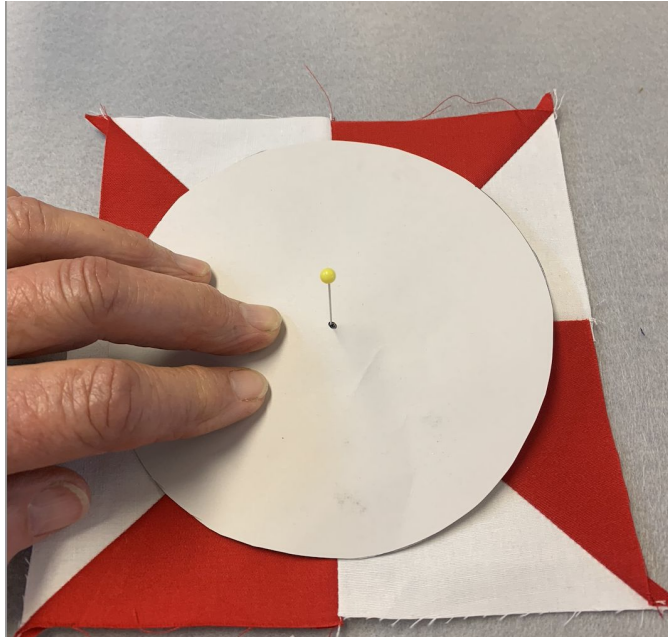
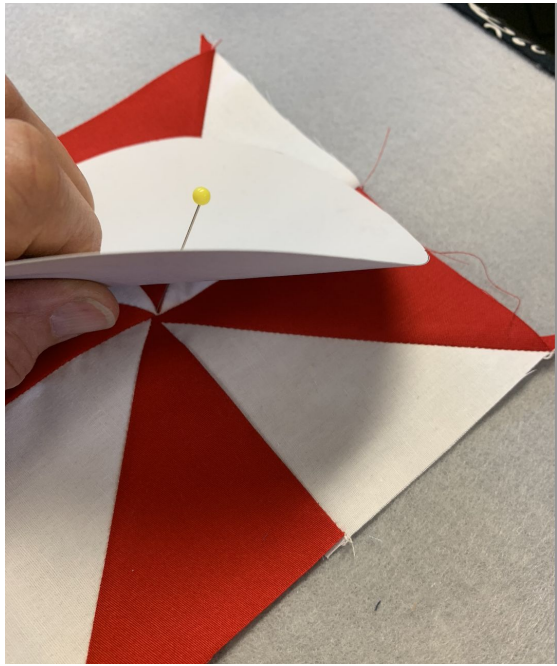
Repeat
with the
other two
pieces to
make 4
half
square
triangles.



Arrange
the half
square
triangle
blocks in a
pinwheel



Sew the four
blocks
together
being careful
to maintain
the placement



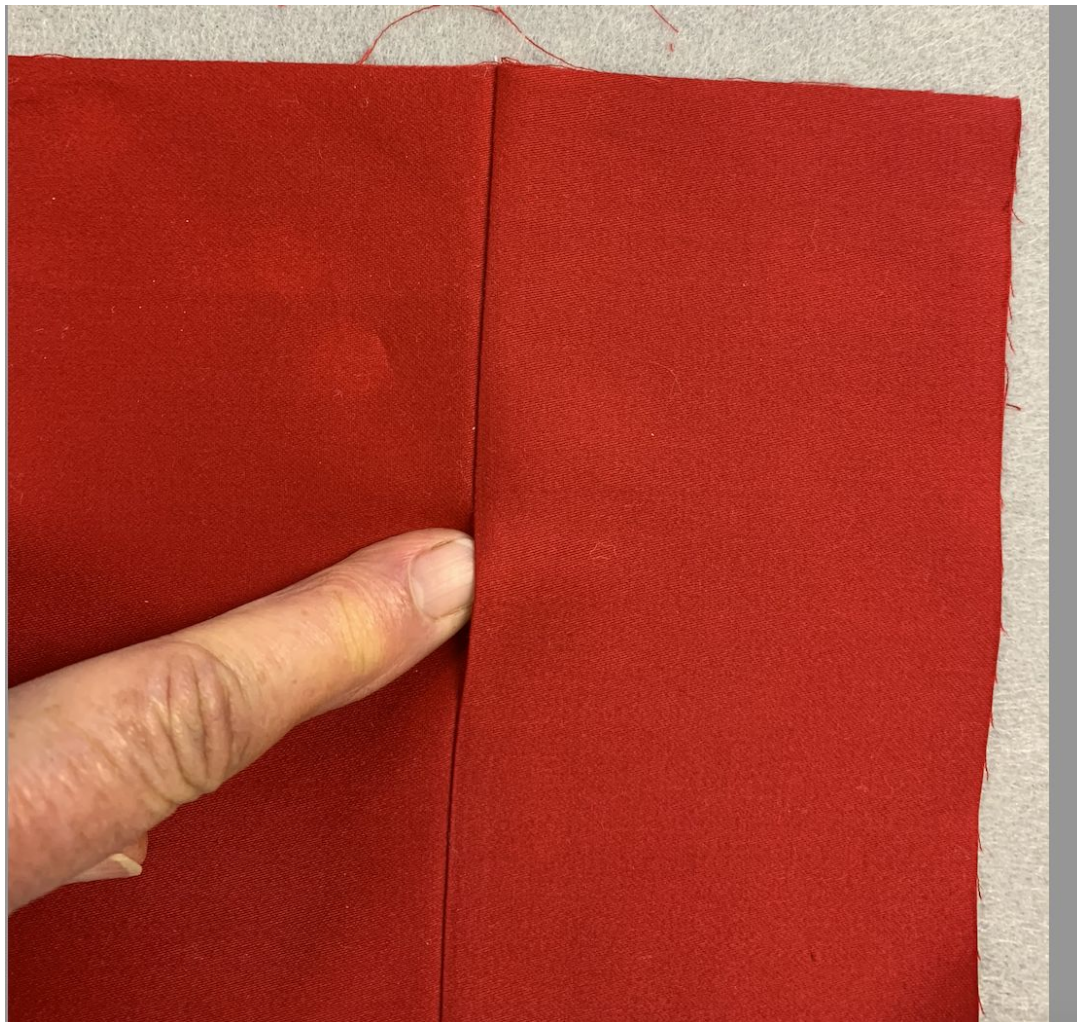
Use a pin in the center of the template to position it on the pinwheel block. Trace.



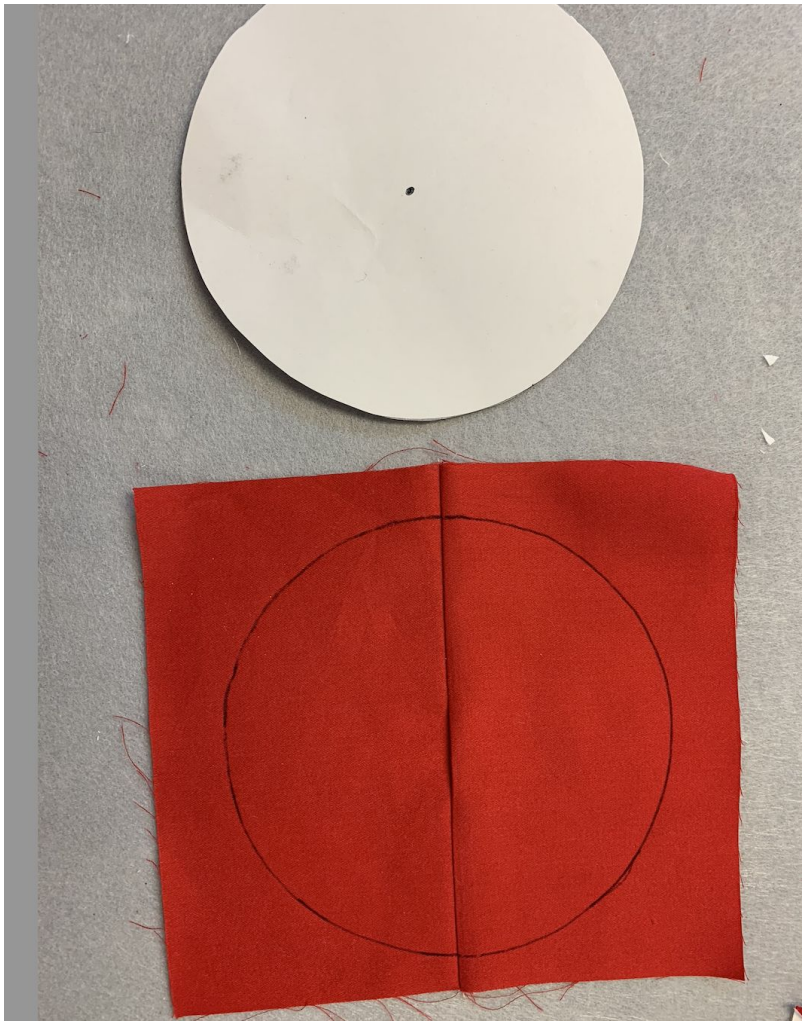
Cut on the traced
line.



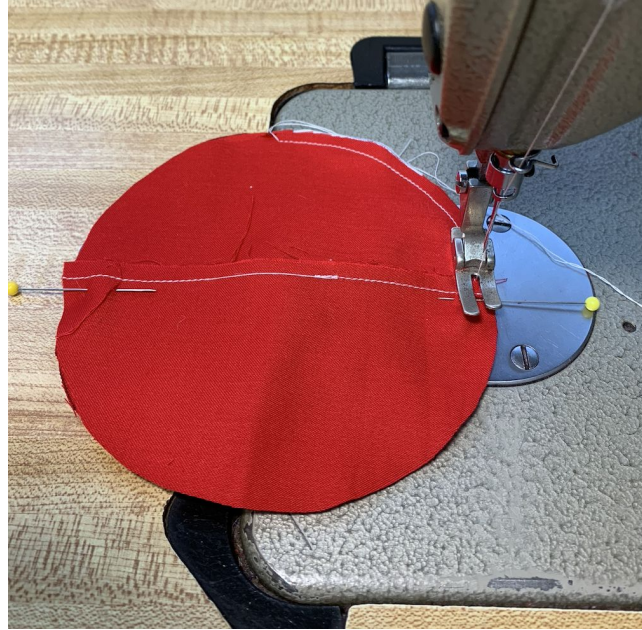
Now take your two back fabrics and seam them together leaving an opening in the center of the seam.



Press the
seam to one
side.



Use the 5 inch diameter template to trace and cut a circle with the opening in the approximate center.



Place the back and top right sides together and stitch a scant $\frac{1}{4}$ inch from the edge all the way around.



It will look like
this.



Using a chopstick or an unsharpened pencil, turn the pincushion right side out through the opening.



Use the chopstick to smooth the edges of the circle from the inside.



Now use the chopstick to stuff small bits of polyfil at a time until it is tightly stuffed.



With Matching
thread, whip
stitch the
opening shut.



Almost done.
The next step is
to get a large
needle and sew a
button in the
center with
embroidery floss
or pearl cotton.



Enjoy or give as a gift. This would be cute wrapped in clear cellophane like a peppermint candy.



Here are some variations. In this one you wrap embroidery floss through the center and around at each seam forming a flower.



This one is a random pieced fabric with only 4 wraps and no button.



This is the easiest variation of all. Just use the template to fussy cut a motif and add a button after its stuffed.



Thanks for
participating.
Text me if you
have questions or
comments.
Ranell